

BAROSSA MODEL



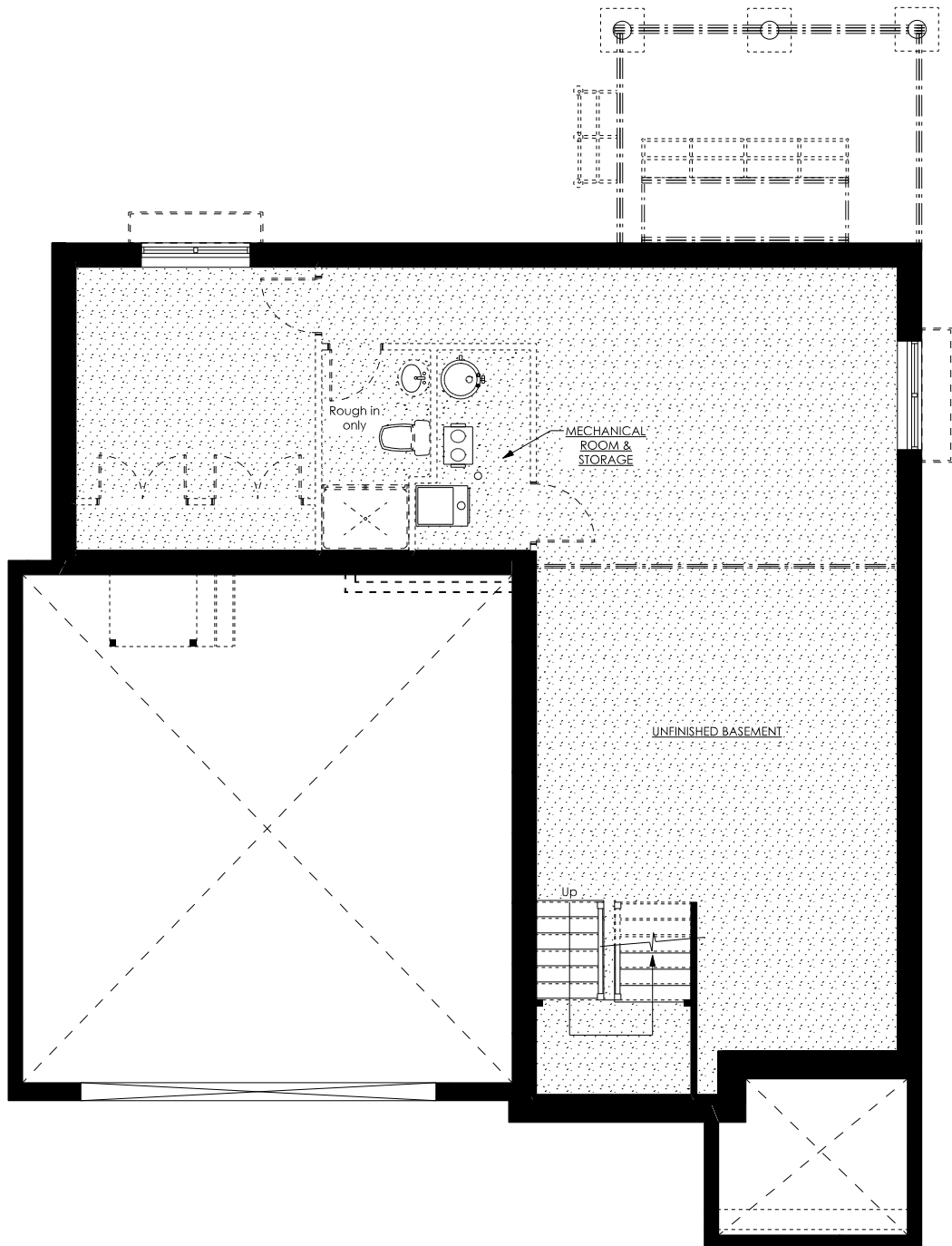
FRONT ELEVATION RENDER

SCALE: 1/8" = 1'-0"



All floor renderings are artist's concept.
Materials, specifications and floor plans are subject to change without notice.
All dimensions are approximate and may not be to scale. Actual usable floor space may vary from the floor layout shown.
Layout for kitchen, bathrooms & mechanical may vary from plan.
Vertical and horizontal bulkheads, which are not shown on plan, may be required for structural, plumbing and heating runs.

BAROSSA MODEL



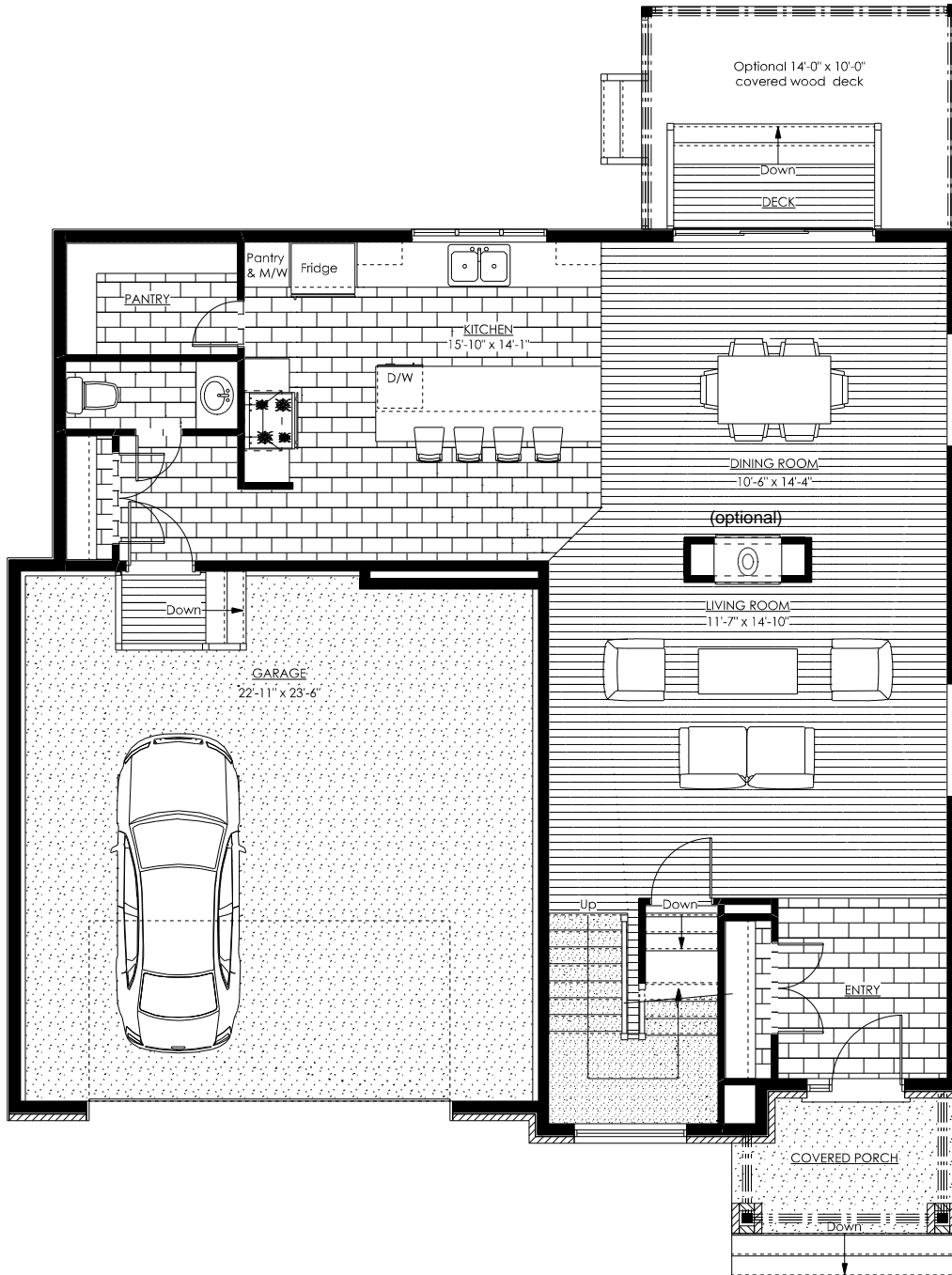
BASEMENT PLAN RENDER

SCALE: 1/8" = 1'-0"



All floor renderings are artist's concept.
Materials, specifications and floor plans are subject to change without notice.
All dimensions are approximate and may not be to scale. Actual usable floor space may vary from the floor layout shown.
Layout for kitchen, bathrooms & mechanical may vary from plan.
Vertical and horizontal bulkheads, which are not shown on plan, may be required for structural, plumbing and heating runs.

BAROSSA MODEL

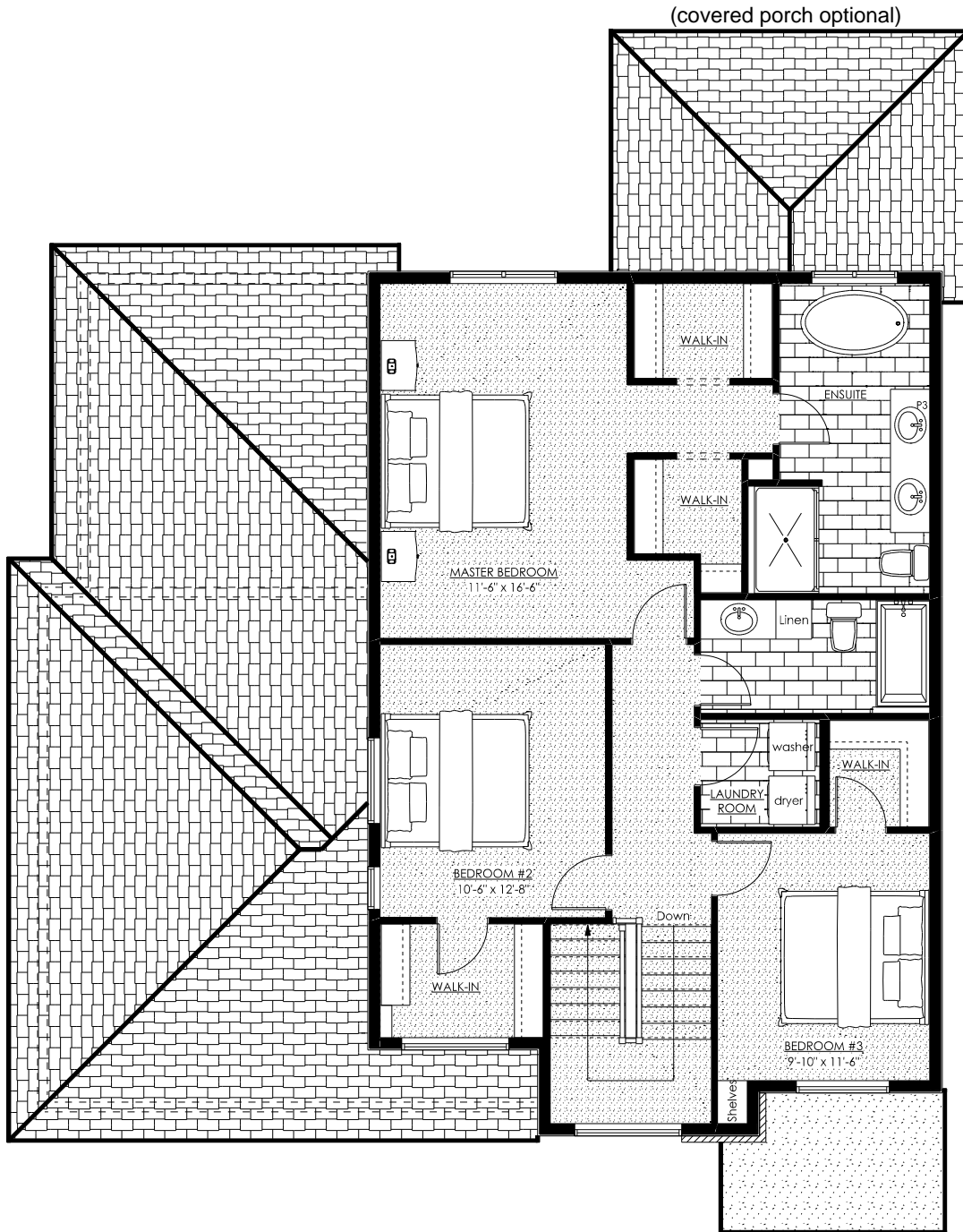


MAIN FLOOR PLAN RENDER 1079 SQ.FT + 1011 SQ.FT
 SCALE: 1/8" = 1'-0" = 2090 SQ.FT TOTAL



All floor renderings are artist's concept.
 Materials, specifications and floor plans are subject to change without notice.
 All dimensions are approximate and may not be to scale. Actual usable floor space may vary from the floor layout shown.
 Layout for kitchen, bathrooms & mechanical may vary from plan.
 Vertical and horizontal bulkheads, which are not shown on plan, may be required for structural, plumbing and heating runs.

BAROSSA MODEL



SECOND FLOOR PLAN RENDER 1011 SQ.FT

SCALE: 1/8" = 1'-0"



All floor renderings are artist's concept.
Materials, specifications and floor plans are subject to change without notice.
All dimensions are approximate and may not be to scale. Actual usable floor space may vary from the floor layout shown.
Layout for kitchen, bathrooms & mechanical may vary from plan.
Vertical and horizontal bulkheads, which are not shown on plan, may be required for structural, plumbing and heating runs.