

ROAD ALLOWANCE BETWEEN CONCESSIONS 6 & 7

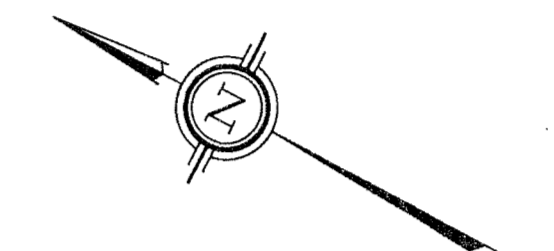
SCHEDULE			
PART	LOT	CONCESSION/PLAN	PIN
1	PART OF 11		PART OF 60118-0510
2			
3	PART OF 14		PART OF 60118-0513
4			
5			
6			
7			
8			
9	ALL OF 15	REGISTERED PLAN 52M-28	ALL OF 60118-0514
10			
11			
12			
13			
14			
15	ALL OF 16		ALL OF 60118-0515
16			
17			
18			
19	PART OF 21	CONCESSION 7	PART OF 60118-0498
20			

I REQUIRE THIS PLAN TO BE DEPOSITED UNDER THE LAND TITLES ACT.
 DATE: July 28/20
 RECEIVED AND DEPOSITED DATE: July 29, 2020
 PLAN 52R-9351
 REPRESENTATIVE FOR THE LAND REGISTRAR FOR THE LAND TITLES DIVISION OF STORMONT NO. 52.
 "G. N. Kurunziza"

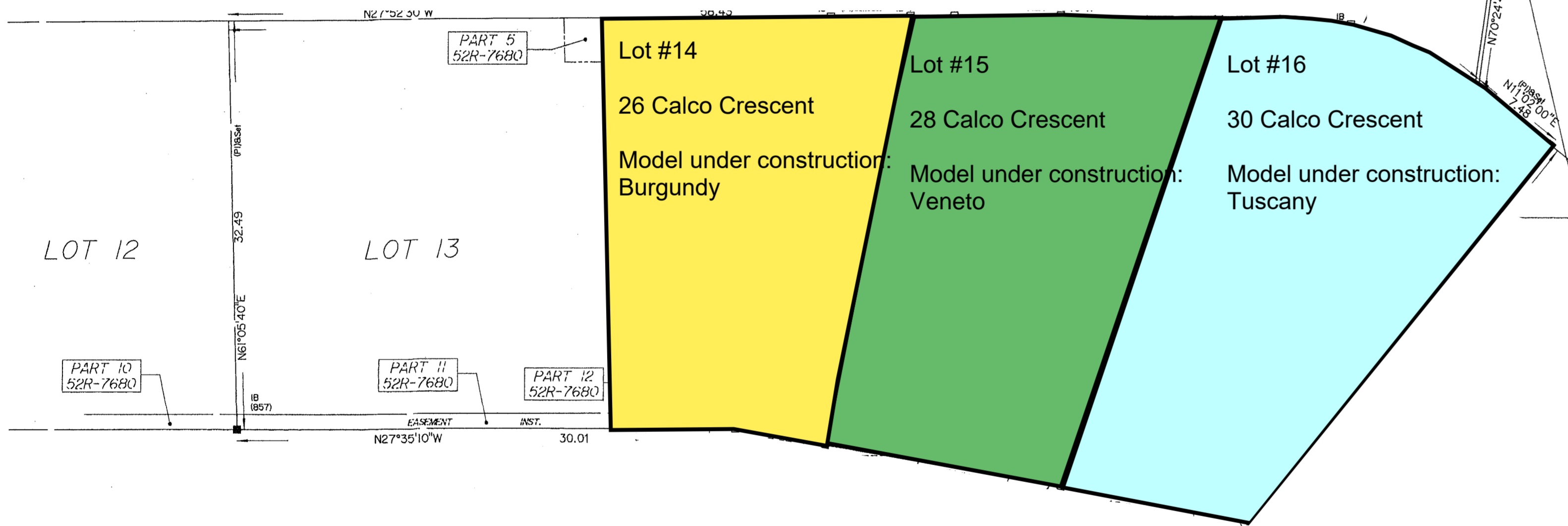
PLAN OF SURVEY OF
ALL OF LOTS 15 AND 16
PART OF LOTS 11 AND 14
REGISTERED PLAN 52M-28
PART OF LOT 21
CONCESSION 7
 (Geographic Township of Roxborough)
 TOWNSHIP OF NORTH STORMONT
 COUNTY OF STORMONT
 Surveyed by Annis, O'Sullivan, Vollebek Ltd.
 Scale 1 : 300

PARTS 5, 11 AND 17 ARE SUBJECT TO EASEMENT AS IN INST. ST61853

DISTANCES AND COORDINATES SHOWN ON THIS PLAN ARE IN METRES AND CAN BE CONVERTED TO FEET BY DIVIDING BY 0.3048.



Calco Crescent



Surveyor's Certificate
 I CERTIFY THAT:
 1. This survey and plan are correct and in accordance with the Surveys Act, the Surveyors Act, the Land Titles Act and the regulations made under them.
 2. The survey was completed on July 21, 2020.
 Date: July 28, 2020
 Tyler J. Allison
 Ontario Land Surveyor

- Notes & Legend**
- Denotes Survey Monument Planted
 - " Survey Monument Found
 - SIB " Standard Iron Bar
 - SSIB " Short Standard Iron Bar
 - IS " Iron Bar
 - (WIT) " Witness
 - (AOG) " Annis, O'Sullivan, Vollebek Ltd.
 - Meas. " Measured
 - (P1) " Registered Plan 52M-28
 - (P2) " (AOG) Reference E-9471-19
 - (P3) " Plan 52R-7680
 - (P4) " Plan 52R-7393

Distances shown on this plan are ground distances and can be converted to grid distances by multiplying by the combined scale factor of 1.00005.

Bearings are grid, derived from Can-Net Real Time Network GPS observations and are referred to the Central Meridian of MTM Zone 8 NAD-83 (CSRS) (2010.0).

Coordinates are derived from Can-Net Real Time Network GPS observations and are referred to the Central Meridian of MTM Zone 8 NAD-83 (CSRS) (2010.0).

Coordinate values are to urban accuracy in accordance with O. Reg. 216/10.

. Point A Northing 5013445.85 Easting 189123.14
 . Point B Northing 5013157.39 Easting 189339.94

Caution: Coordinates cannot, in themselves, be used to re-establish corners or boundaries shown on this plan.