

# NAPA MODEL



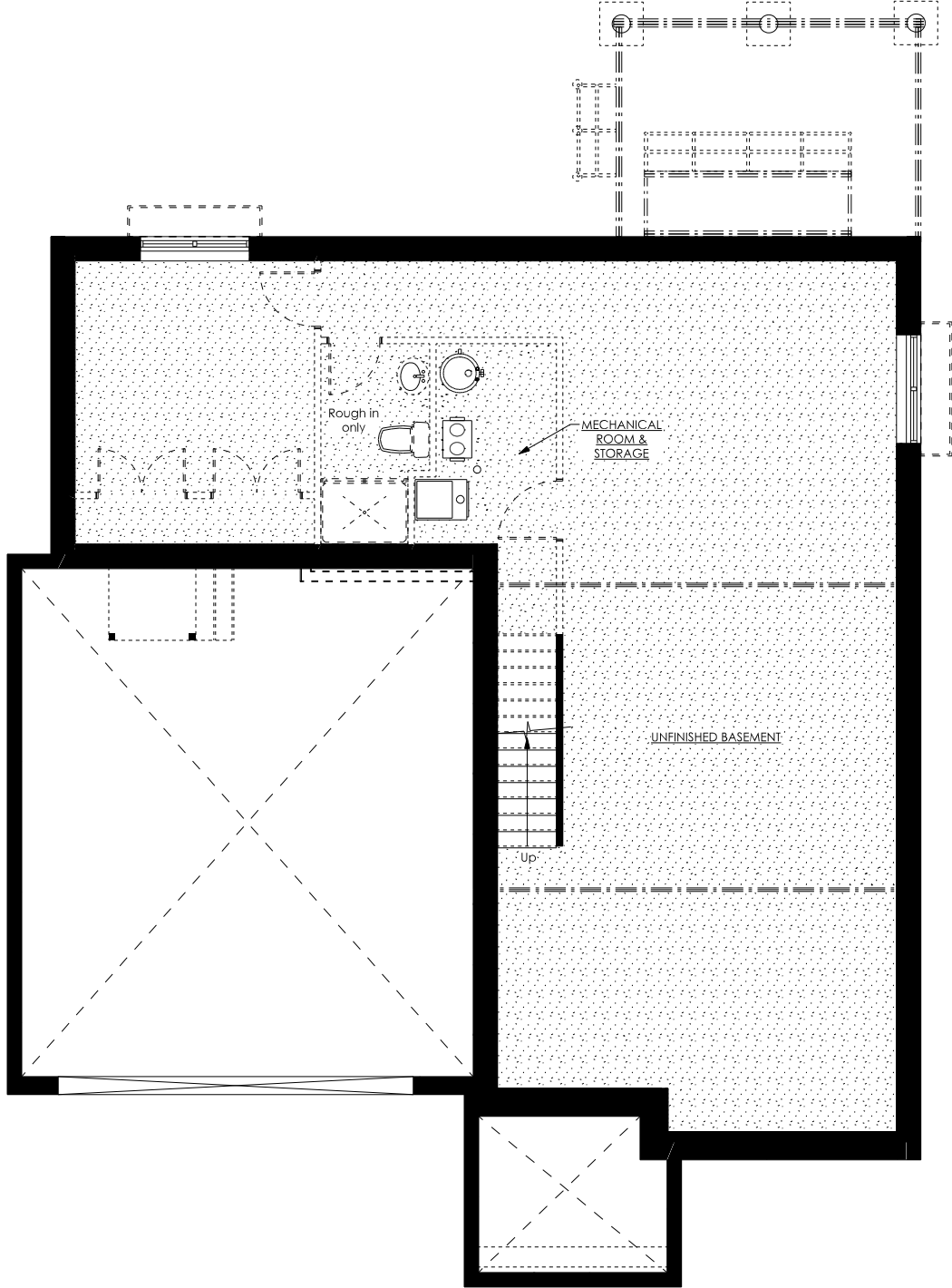
## FRONT ELEVATION RENDER

SCALE: 1/8" = 1'-0"



All floor renderings are artist's concept.  
Materials, specifications and floor plans are subject to change without notice.  
All dimensions are approximate and may not be to scale. Actual usable floor space may vary from the floor layout shown.  
Layout for kitchen, bathrooms & mechanical may vary from plan.  
Vertical and horizontal bulkheads, which are not shown on plan, may be required for structural, plumbing and heating runs.

# NAPA MODEL



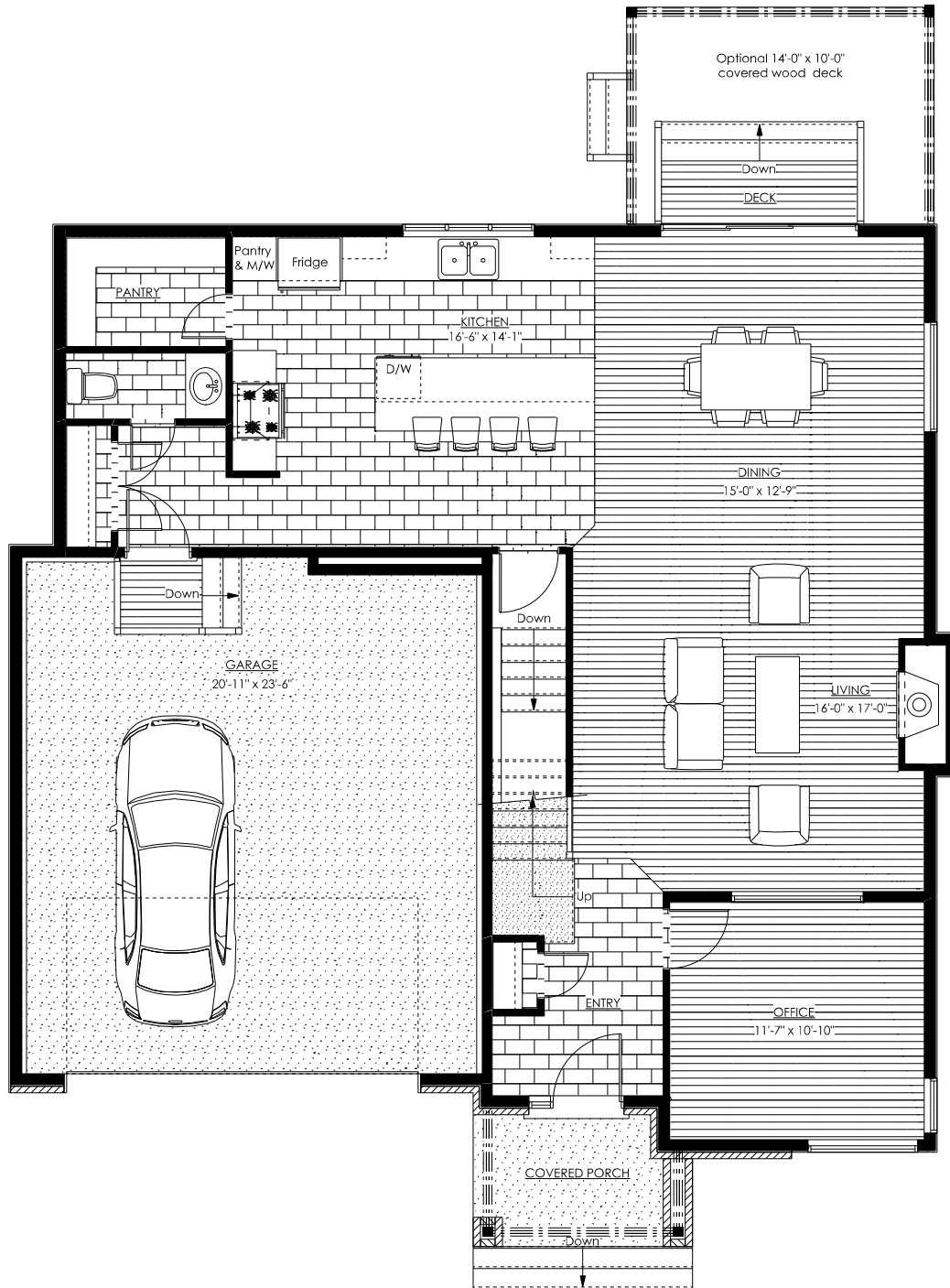
## BASEMENT PLAN RENDER

SCALE: 1/8" = 1'-0"



All floor renderings are artist's concept.  
Materials, specifications and floor plans are subject to change without notice.  
All dimensions are approximate and may not be to scale. Actual usable floor space may vary from the floor layout shown.  
Layout for kitchen, bathrooms & mechanical may vary from plan.  
Vertical and horizontal bulkheads, which are not shown on plan, may be required for structural, plumbing and heating runs.

# NAPA MODEL



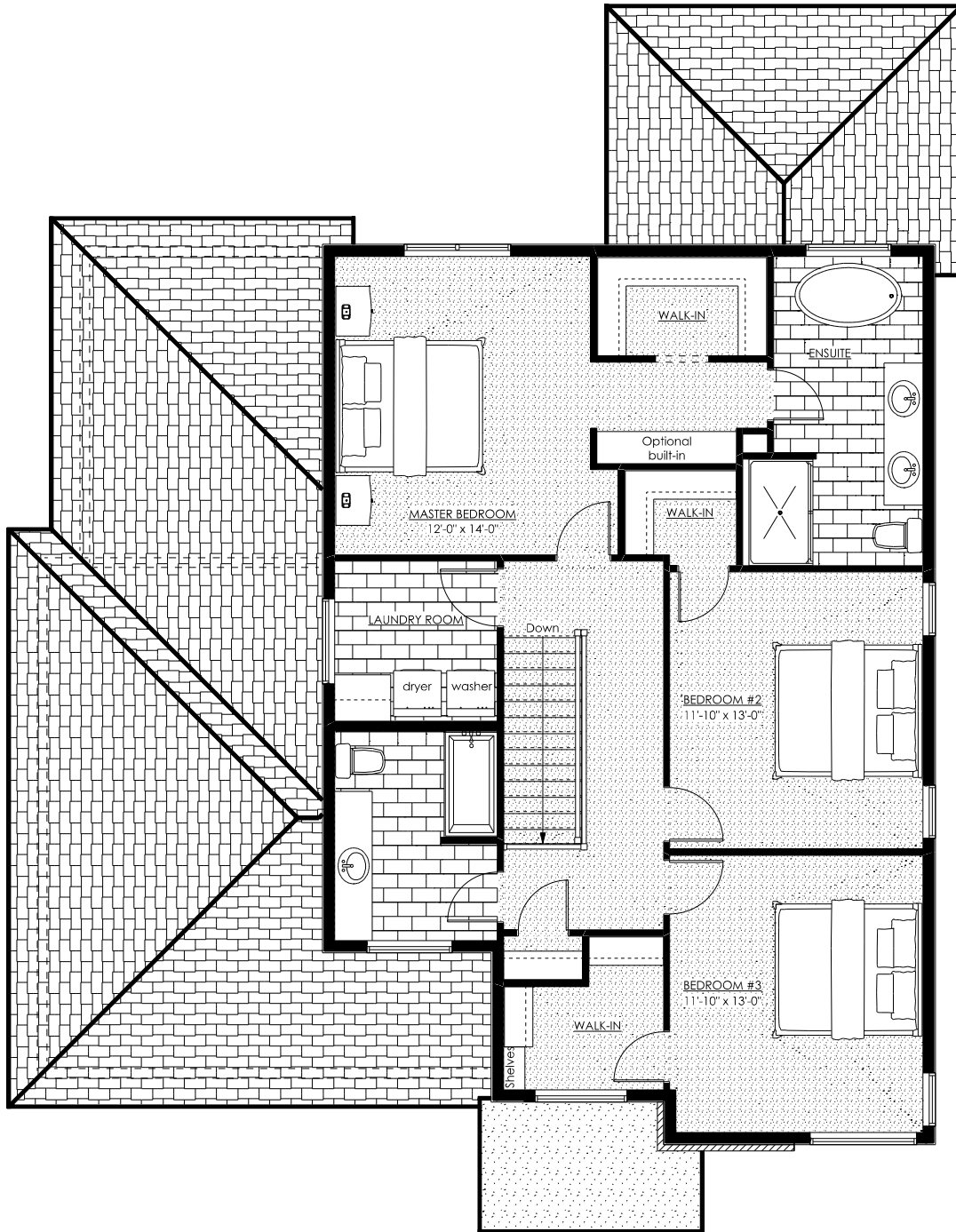
**MAIN FLOOR PLAN RENDER** 1140 SQ.FT + 1110 SQ.FT  
 = 2250 SQ.FT TOTAL

SCALE: 1/8" = 1'-0"



All floor renderings are artist's concept.  
 Materials, specifications and floor plans are subject to change without notice.  
 All dimensions are approximate and may not be to scale. Actual usable floor space may vary from the floor layout shown.  
 Layout for kitchen, bathrooms & mechanical may vary from plan.  
 Vertical and horizontal bulkheads, which are not shown on plan, may be required for structural, plumbing and heating runs.

# NAPA MODEL



SECOND FLOOR PLAN RENDER 1110 SQ.FT

SCALE: 1/8" = 1'-0"



All floor renderings are artist's concept.  
Materials, specifications and floor plans are subject to change without notice.  
All dimensions are approximate and may not be to scale. Actual usable floor space may vary from the floor layout shown.  
Layout for kitchen, bathrooms & mechanical may vary from plan.  
Vertical and horizontal bulkheads, which are not shown on plan, may be required for structural, plumbing and heating runs.