

TUSCANY MODEL



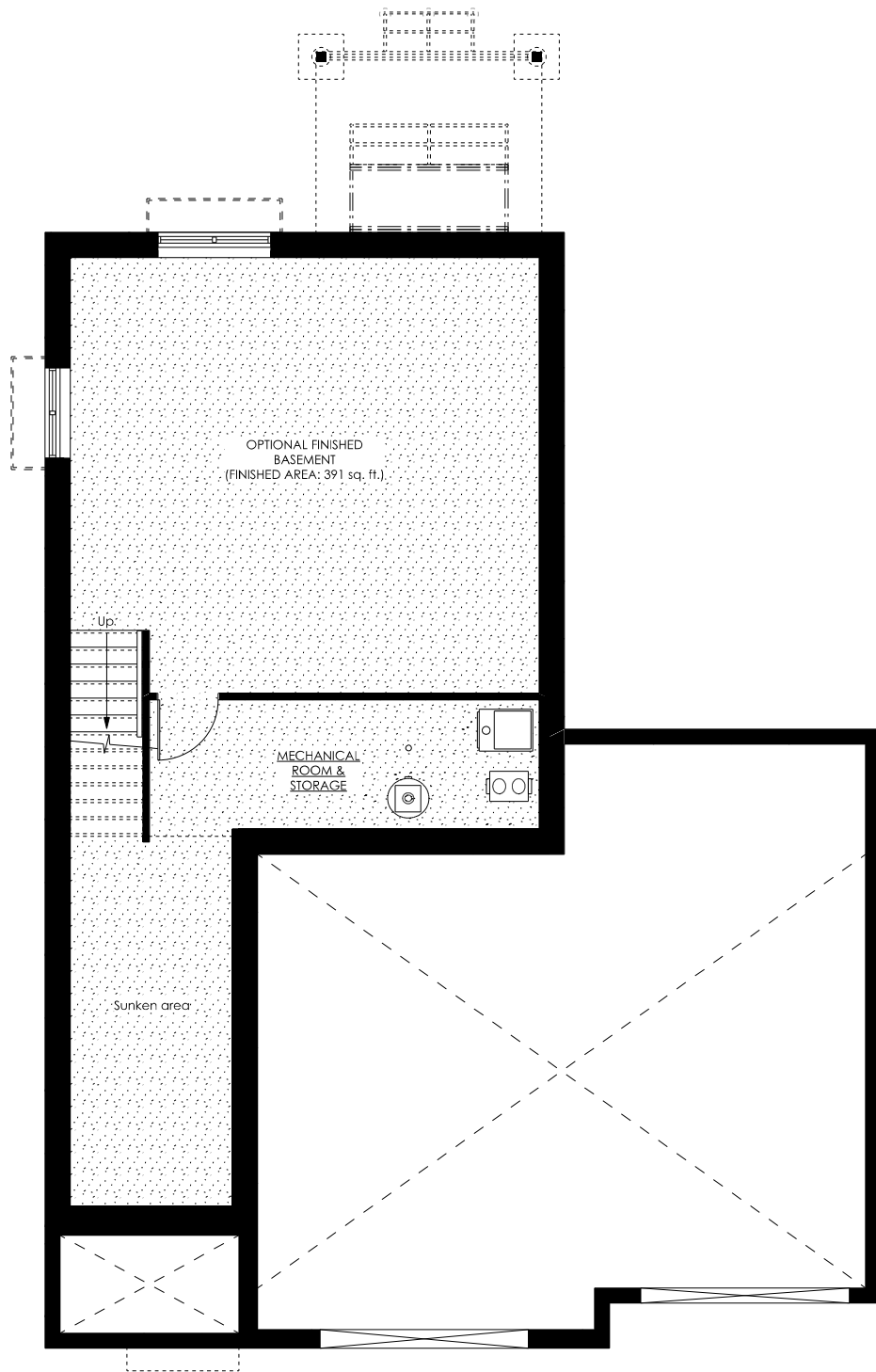
FRONT ELEVATION RENDER

SCALE: 1/8" = 1'-0"



All floor renderings are artist's concept.
Materials, specifications and floor plans are subject to change without notice.
All dimensions are approximate and may not be to scale. Actual usable floor space may vary from the floor layout shown.
Layout for kitchen, bathrooms & mechanical may vary from plan.
Vertical and horizontal bulkheads, which are not shown on plan, may be required for structural, plumbing and heating runs.

TUSCANY MODEL



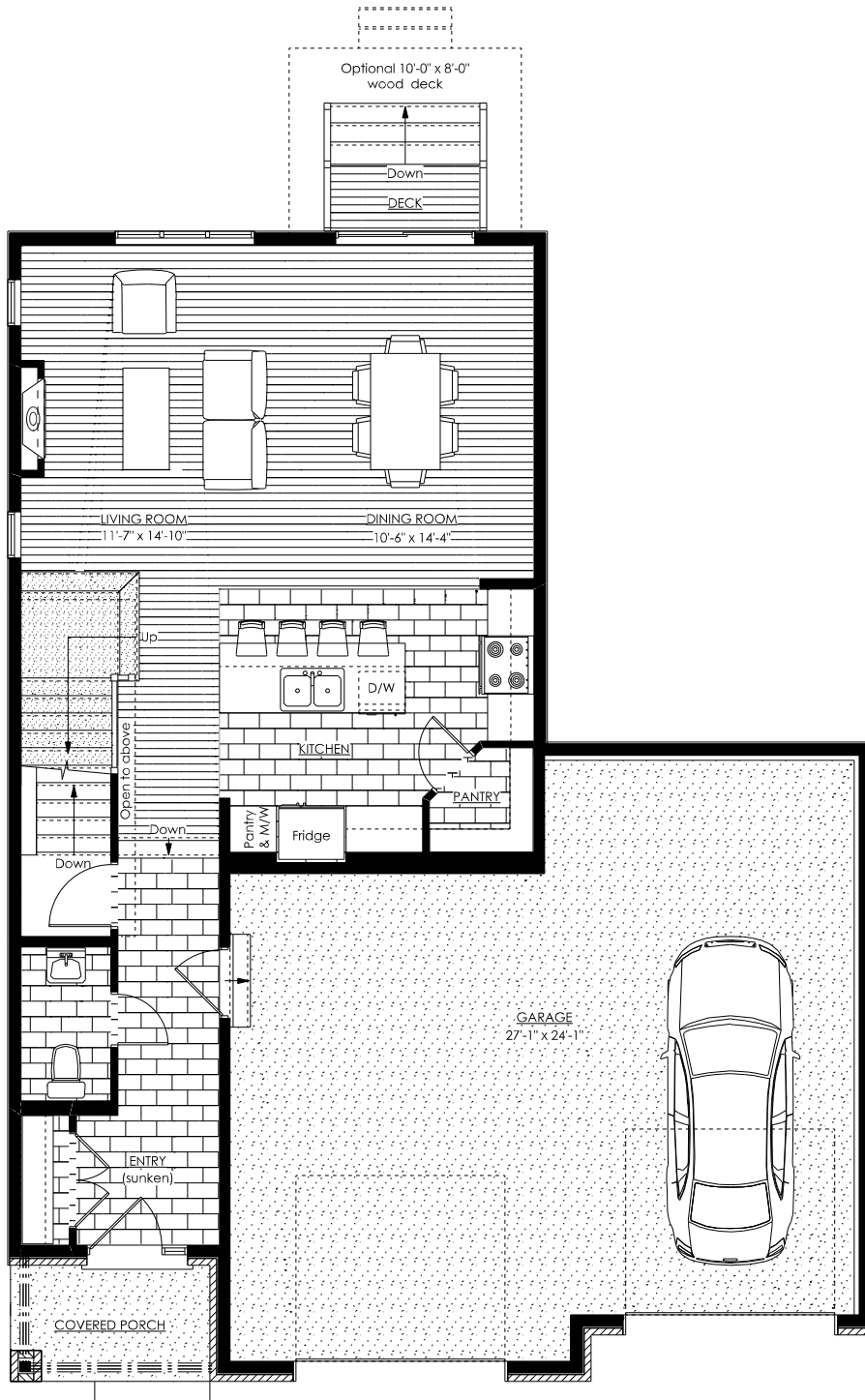
BASEMENT PLAN RENDER

SCALE: 1/8" = 1'-0"



All floor renderings are artist's concept.
Materials, specifications and floor plans are subject to change without notice.
All dimensions are approximate and may not be to scale. Actual usable floor space may vary from the floor layout shown.
Layout for kitchen, bathrooms & mechanical may vary from plan.
Vertical and horizontal bulkheads, which are not shown on plan, may be required for structural, plumbing and heating runs.

TUSCANY MODEL



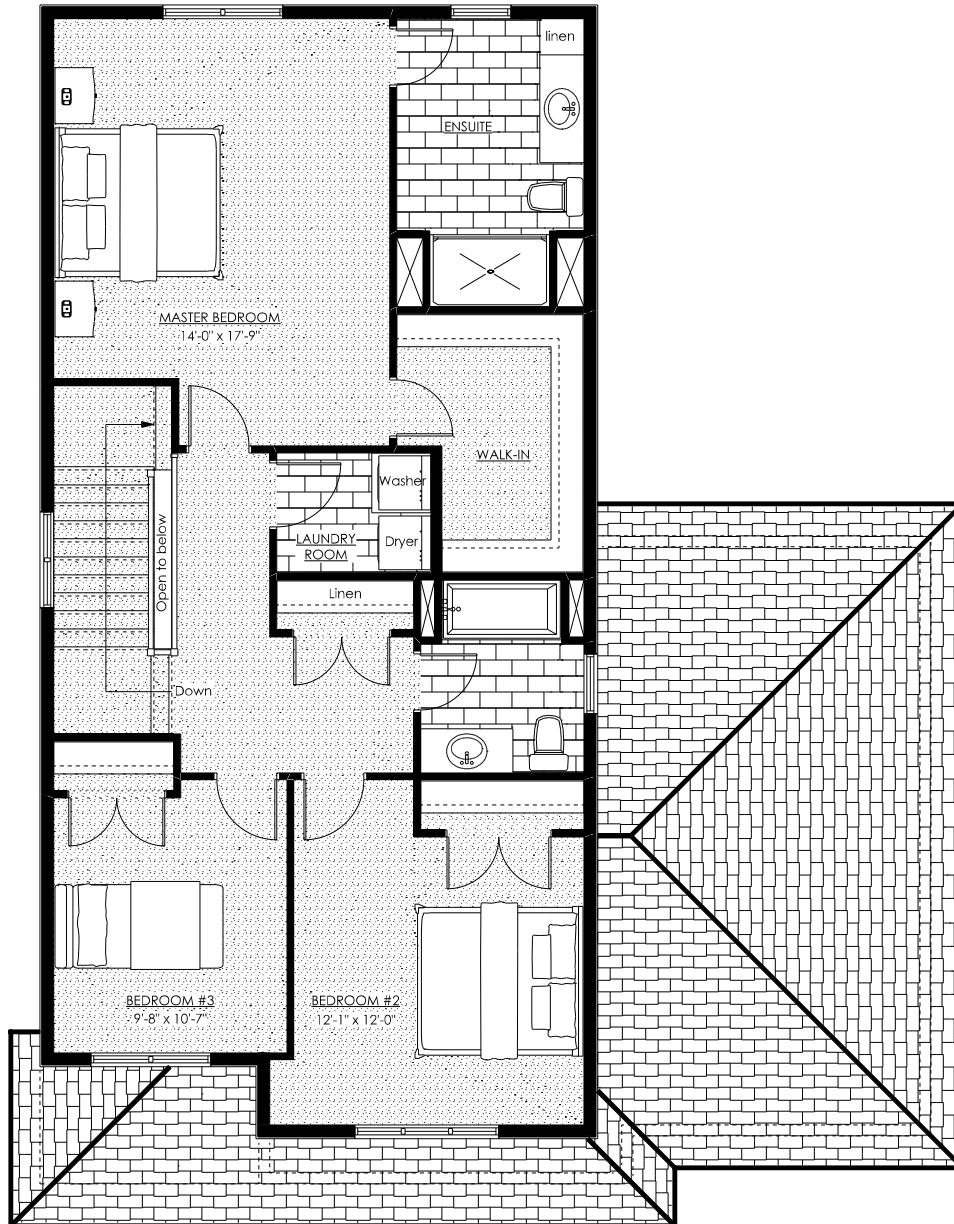
MAIN FLOOR PLAN RENDER 789 SQ.FT. + 1054 SQ.FT.
 = 1843 SQ.FT TOTAL

SCALE: 1/8" = 1'-0"



All floor renderings are artist's concept.
 Materials, specifications and floor plans are subject to change without notice.
 All dimensions are approximate and may not be to scale. Actual usable floor space may vary from the floor layout shown.
 Layout for kitchen, bathrooms & mechanical may vary from plan.
 Vertical and horizontal bulkheads, which are not shown on plan, may be required for structural, plumbing and heating runs.

TUSCANY MODEL



SECOND FLOOR PLAN RENDER 1054 SQ.FT

SCALE: 1/8" = 1'-0"



All floor renderings are artist's concept.
Materials, specifications and floor plans are subject to change without notice.
All dimensions are approximate and may not be to scale. Actual usable floor space may vary from the floor layout shown.
Layout for kitchen, bathrooms & mechanical may vary from plan.
Vertical and horizontal bulkheads, which are not shown on plan, may be required for structural, plumbing and heating runs.